

■ Walt Disney's Comics and Stories – Vol. 5 No. 12 (September 1945)

Summary of Observations

This comic is **structurally complete**, with both front and back covers present, but it exhibits **pronounced spine deterioration, edge loss, and paper fatigue consistent with heavy mid-1940s handling**. The spine shows **extensive paper loss and layered delamination**, particularly along the mid-lower section, with original spine paper missing in multiple segments and inner wraps exposed. Damage patterns indicate progressive tear-out and edge erosion rather than repair or reinforcement; **no tape or adhesive material is present**.

Staple, spine, and centerfold photographs taken together indicate **both original staples remain present**, though surrounded by damaged and thinning paper. The centerfold remains attached at both staple points despite surrounding stress and wear. Interior pages show **advanced oxidation, margin darkening, and handling wear**, but no full-thickness interior tears are clearly visible in the photographed pages. Brittleness testing indicates stiffness associated with age, but the paper has **not crossed into active brittleness**.

Front Cover — Observations (IMG_1412)

Walt Disney's Comics and Stories – Vol. 5 No. 12 (September 1945)

Photo Condition & Quality

Clear, high-resolution image showing the entire cover, all edges, corners, and spine edge. Surface wear and spine loss are visible without glare or obstruction.

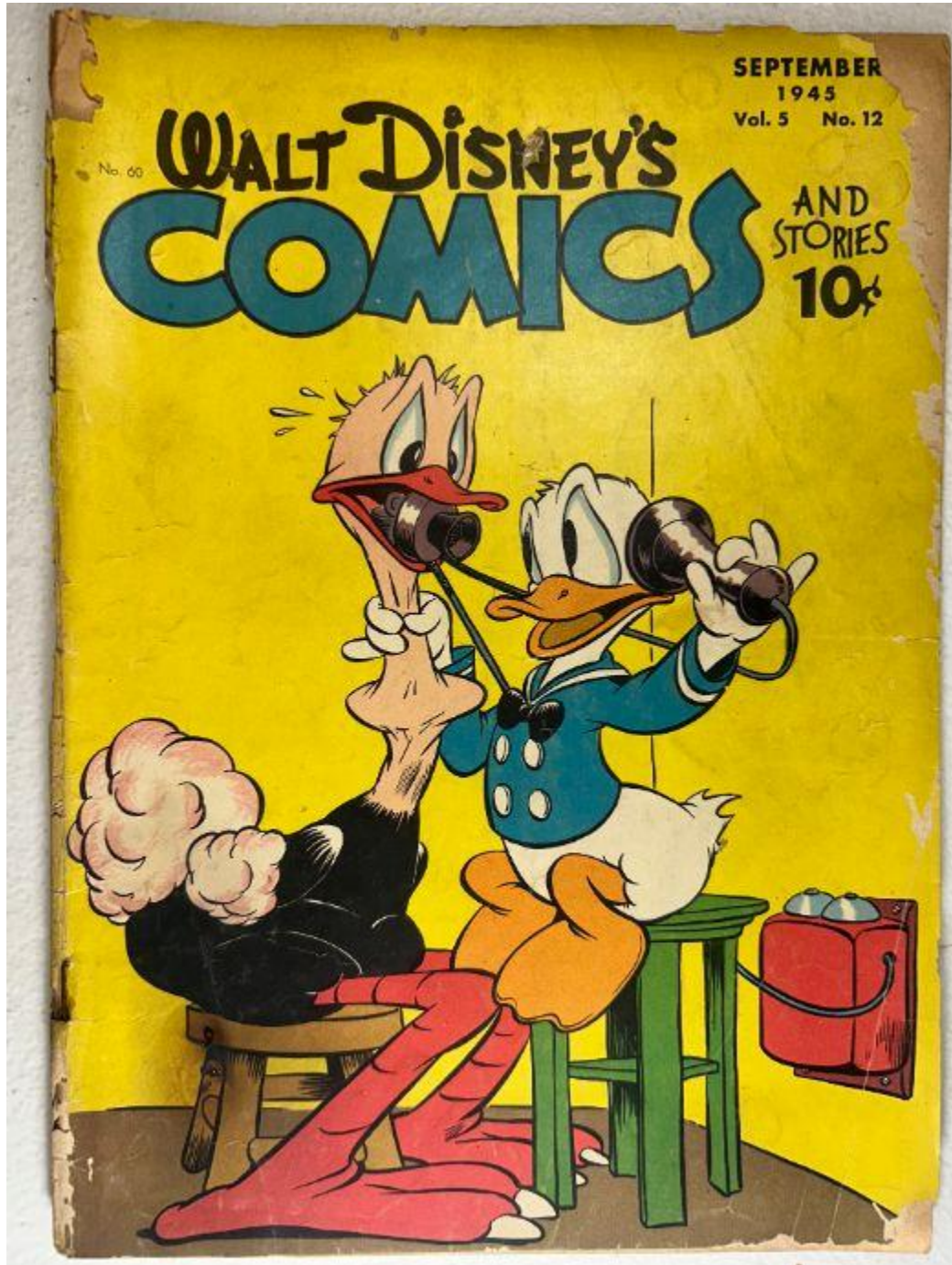
Scene & Composition

Donald Duck and another character are seated and holding handheld telephone receivers connected by wires. The background is a bold yellow field. Masthead reads *Walt Disney's Comics and Stories* with issue text **September 1945 – Vol. 5 No. 12 – 10¢**.

Findings

- **Significant spine paper loss**, with original spine stock missing in multiple sections, especially through the middle and lower spine.
- **Irregular tearing and chipping along the spine edge**, with exposed interior wraps visible.

- **Edge chipping along the top and bottom edges**, more pronounced near the spine corners.
- **Corner rounding and softening** on all four corners, heaviest at the lower corners.
- **Surface abrasion and rub wear** across the yellow background, producing lighter scuffed patches.



Color & Printing Quality

Yellow remains saturated but uneven due to abrasion. Linework and lettering remain legible.

Paper & Structural Notes

Advanced oxidation is present, especially along exposed edges. Structural weakness is concentrated at the spine due to material loss.

Overall Impression

The front cover is visually intact but **structurally weakened by extensive spine erosion and edge wear**.

Back Cover — Observations (IMG_1413)

Walt Disney's Comics and Stories – Vol. 5 No. 12 (September 1945)

Photo Condition & Quality

Clear image of the full back cover, including advertisement and margins.

Scene & Composition

Subscription advertisement with Mickey Mouse and a globe, promotional text offering multi-year subscriptions, and a mail-in form at the bottom.

Findings

- **General surface dirt and discoloration** across the page.
- **Creasing** visible through the central area of the form.
- **Edge wear and thinning** along the bottom margin.
- **Corner rounding**, most evident at the lower corners.

Color & Printing Quality

Colors remain readable though muted by oxidation.

THERE'S A WORLD OF FUN



for you
with
MICKEY MOUSE
DONALD DUCK
and the
DISNEY GANG
in the
ENTERTAINING
LAUGH-FILLED
ISSUES OF

WALT DISNEY'S
COMICS AND
STORIES

TWO YEARS only \$1.75
(24 issues)

THREE YEARS (36 issues) only \$2.50

TOPS IN COMIC ENTERTAINMENT!

Mail to: **K. K. PUBLICATIONS, Inc.**
POUGHKEEPSIE, NEW YORK

DEPT. 9

Gentlemen:
Enclosed find \$ _____ for which please enter the following subscription
to **Walt Disney's Comics and Stories** for _____ monthly issues beginning
with _____ issue. (Please print)

Name _____

Street and Number _____

City or Town _____ Mailing Dist. No. _____ State _____

Check here if this is a new subscription

Donor's Name _____

Address _____

Paper Condition

Uniform tan oxidation; no moisture staining observed.

Overall Impression

Back cover remains present and intact, showing moderate handling wear and aging.

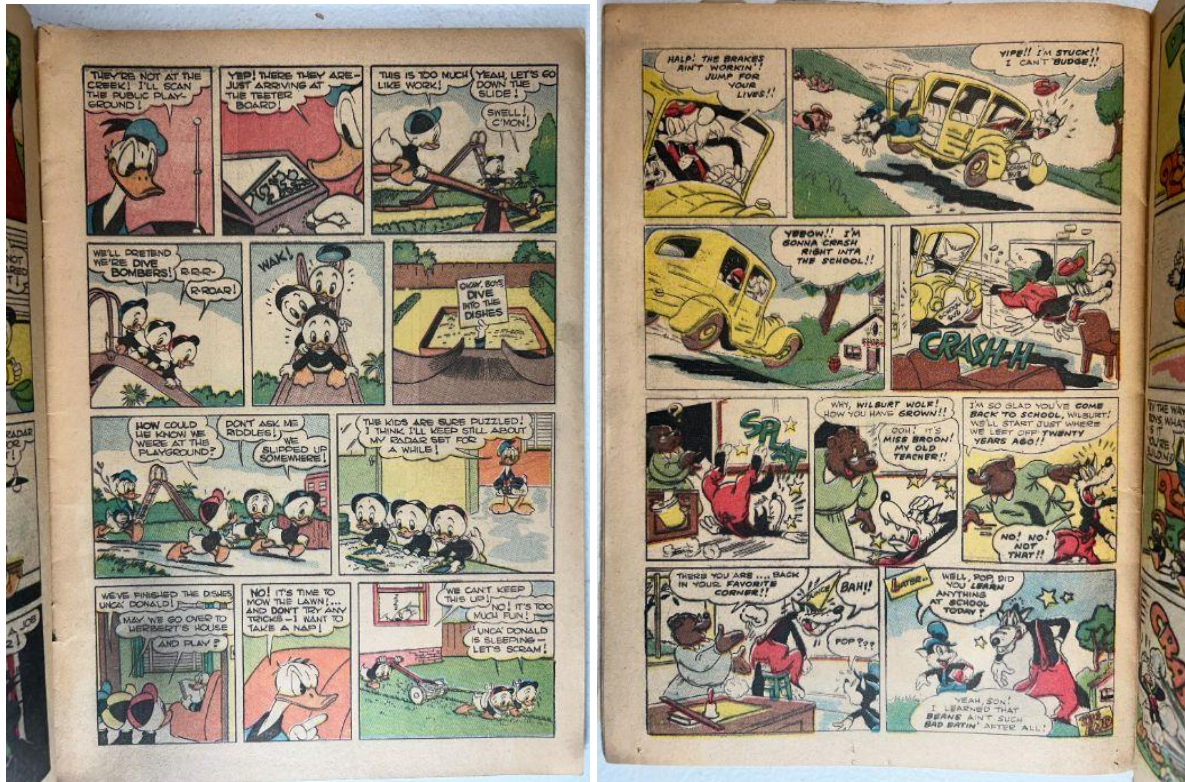
Interior Pages — Observations (IMG_1414-IMG_1417)

Walt Disney's Comics and Stories – Vol. 5 No. 12 (September 1945)

Photo Condition & Quality

Interior pages photographed clearly with margins and gutters visible.





Page Color

Tan to medium brown.

Findings

- No clearly visible full-thickness interior tears in the photographed pages.
- **Margin foxing and edge darkening** throughout.
- **Lower-corner creasing** on several pages.
- Minor edge nicks consistent with handling.

Color & Printing Quality

Colors remain present but softened by age; linework and halftones are crisp.

Structural Notes

Pages remain firmly attached at the staples.

Overall Impression

Interior pages show **advanced age wear without major tearing** in the sampled images.

Centerfold — Observations (IMG_1418)

Walt Disney's Comics and Stories – Vol. 5 No. 12 (September 1945)

Photo Condition & Quality

Clear two-page image showing the fold and staple alignment.



Findings

- Centerfold remains attached at both staple positions.
- **Darkened fold line** from age and handling.
- No clearly visible full-thickness centerfold tears in the photographed image.

Overall Impression

Centerfold is intact, showing fold fatigue but no obvious separations.

Spine — Observations (IMG_1419)

Walt Disney's Comics and Stories – Vol. 5 No. 12 (September 1945)

Photo Condition & Quality

Side-profile image showing cover thickness and loss along the spine.



Findings

- **Extensive spine erosion**, with layered paper loss and exposed interior wraps.
- **Multiple torn voids** along the spine edge where original spine paper is absent.
- Forward spine roll evident.

Overall Impression

Spine integrity is significantly compromised due to progressive tearing and material loss.

Upper Staple — Observations (IMG_1420)

Walt Disney's Comics and Stories – Vol. 5 No. 12 (September 1945)

Photo Condition & Quality

Macro image clearly showing the staple head and surrounding paper.



Findings

- **Upper staple present.**
- Surrounding paper shows thinning and edge breakdown.
- No tape or adhesive visible.

Overall Impression

Upper staple remains functional but is stressed by surrounding paper loss.

Lower Staple — Observations (IMG_1421)

Walt Disney's Comics and Stories – Vol. 5 No. 12 (September 1945)

Photo Condition & Quality

Clear close-range view of the lower staple and fold.



Findings

- **Lower staple present.**
- Surrounding paper shows wear and thinning but no tear-out.

Overall Impression

Lower staple remains intact and engaged.

Brittleness Test — Observations (IMG_1422)

Walt Disney's Comics and Stories – Vol. 5 No. 12 (September 1945)

Photo Condition & Quality

Clear macro image of page-corner flex.



Findings

Paper flexes stiffly but does not crack or flake.

Overall Impression

Paper shows advanced aging but has **not reached full brittleness**.